

Appendix 3

Proposed Introduction of Waiting Restrictions on Falls Road and Divis Street, Belfast (Between Beechmount Avenue and Millfield) Transport NI Correspondence and Layout Drawings

transportni



Department for

Regional Development

www.drdni.gov.uk

Eastern Division

Hydebank
4 Hospital Road
Belfast
BT8 8JL

Telephone: 0300 200 7893

Fax: (028) 9025 3220

Textphone number: 028 9054 0022

Email:

www.roadsni.gov.uk

Being Dealt With By: D McGarvey

Direct Line: 028 9025 3145

Your Ref:

Our Ref:

Date: 18 August 2015

Mrs Suzanne Wylie
Chief Executive
Belfast City Council
City Hall
BELFAST
BT1 6RB

Table with routing information: Chief Executive's Office, Date 20.8.15, Seen by CX, Referred to (ACX, GR, Dev, P&L, Ref), Corp Comms, Dem Serv., Bus Supp., F&R, H&ES, P&P, Other.

Dear Mrs Wylie

PROPOSED INTRODUCTION OF WAITING RESTRICTIONS ON FALLS ROAD AND DIVIS STREET, BELFAST (BETWEEN BEECHMOUNT AVENUE AND MILLFIELD)

I am writing to inform you that as part of the Belfast Rapid Transit scheme, TransportNI propose to introduce waiting restrictions on Falls Road and Divis Street, Belfast, as outlined below:-

- We propose to introduce a Parking and Waiting Restrictions Order limited to '2 hours, no return within 1 hour, Monday to Saturday, 8.00 am to 6.00 pm', on a number of parking lay-bys on Falls Road, Belfast, between Grosvenor Road and Millfield.

This proposed restriction aims to deter all day parking and create a turnover of available spaces that will benefit local businesses and offices along the route.

- We propose to introduce 25m of a no waiting 'At Any Time' waiting restriction (double yellow lines), on the 'north' side of Falls Road, Belfast, between Beechmount Avenue and Islandbawn Drive. Loading and unloading will be permitted within the proposed waiting restrictions.

This proposed restriction will regulate all day parking and aid traffic progression to facilitate the operation of the BRT bus lane at this location.

Please find enclosed drawings of these locations for your information, which outline the areas we propose to introduce these waiting restrictions.



transportni



We would welcome any comments Belfast City Council may have on this proposal.

Yours sincerely

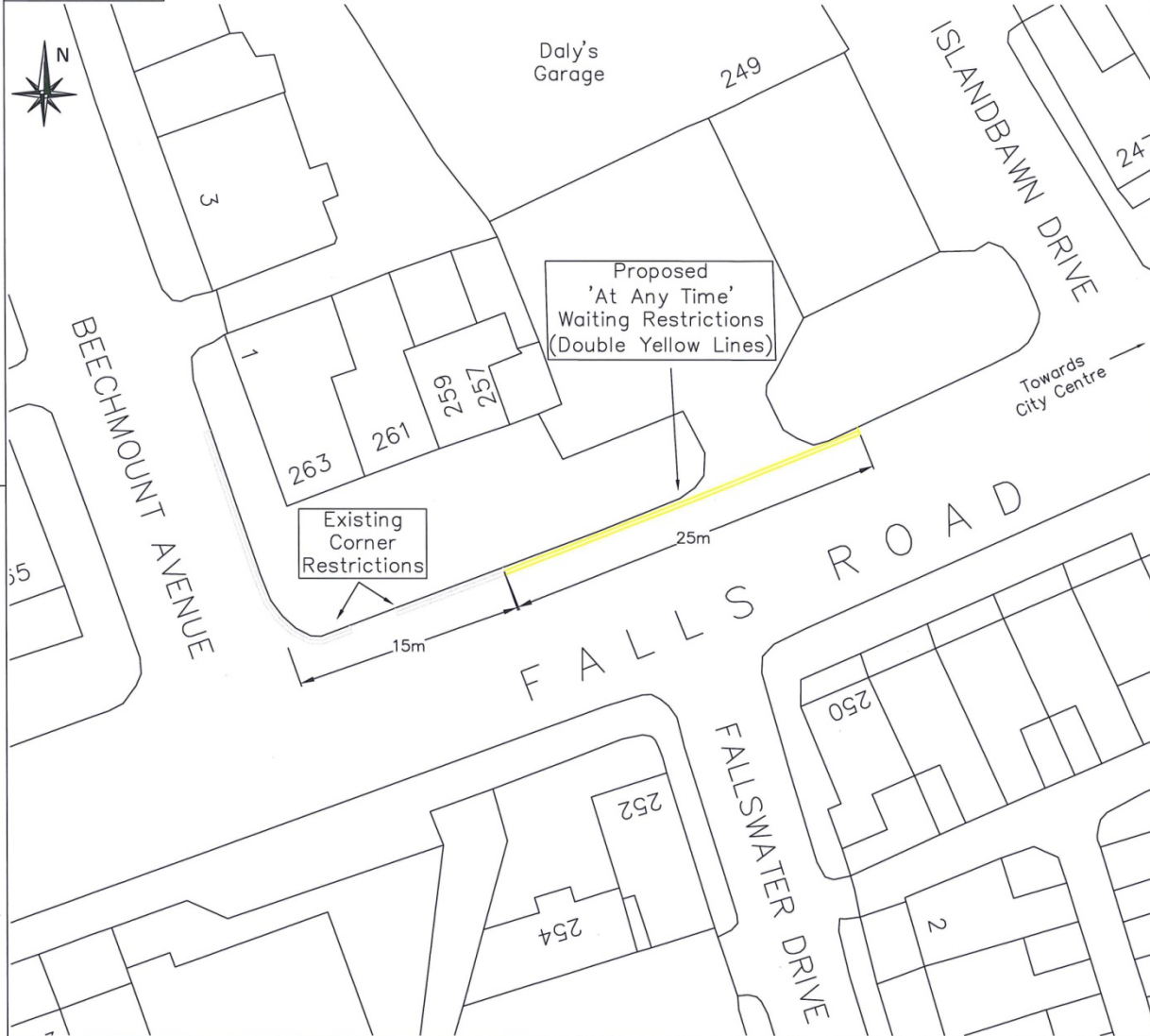
R. Gordon
ROY GORDON
Traffic Manager
Traffic Management 1

ENC



HYDE/ROADS/NTC/G/15/MA700; DMCG

Drg. No.



NO	REVISION	DATE
----	----------	------

Key:

Existing corner restrictions marked in GREY

Proposed 'At Any Time' waiting restrictions marked in YELLOW

*Based upon Ordnance Survey of Northern Ireland's data with the permission of the controller of Her Majesty's Stationary Office, © Crown copyright and database rights NI MA ES&LA214'.
 *Unauthorized reproduction infringes © Crown copyright and may lead to prosecution or civil proceedings'.

Project **FALLS ROAD BELFAST**

Title **WAITING RESTRICTIONS 'At Any Time' (Double Yellow Lines)**

FILE NO.	DESIGNED	DMCG	date JULY 15
DRAWN	CHECKED		date
TRACED	APPROVED		date
Drg. No.	Revision		

Scales 1:250 Original Drg Size: A3

transportni

EASTERN DIVISION

Hydebank
4 Hospital Road
Belfast BT8 8JL

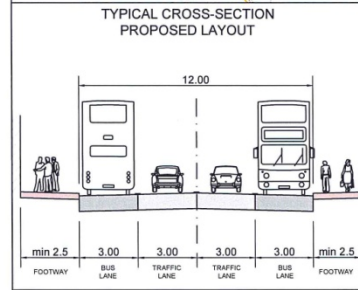
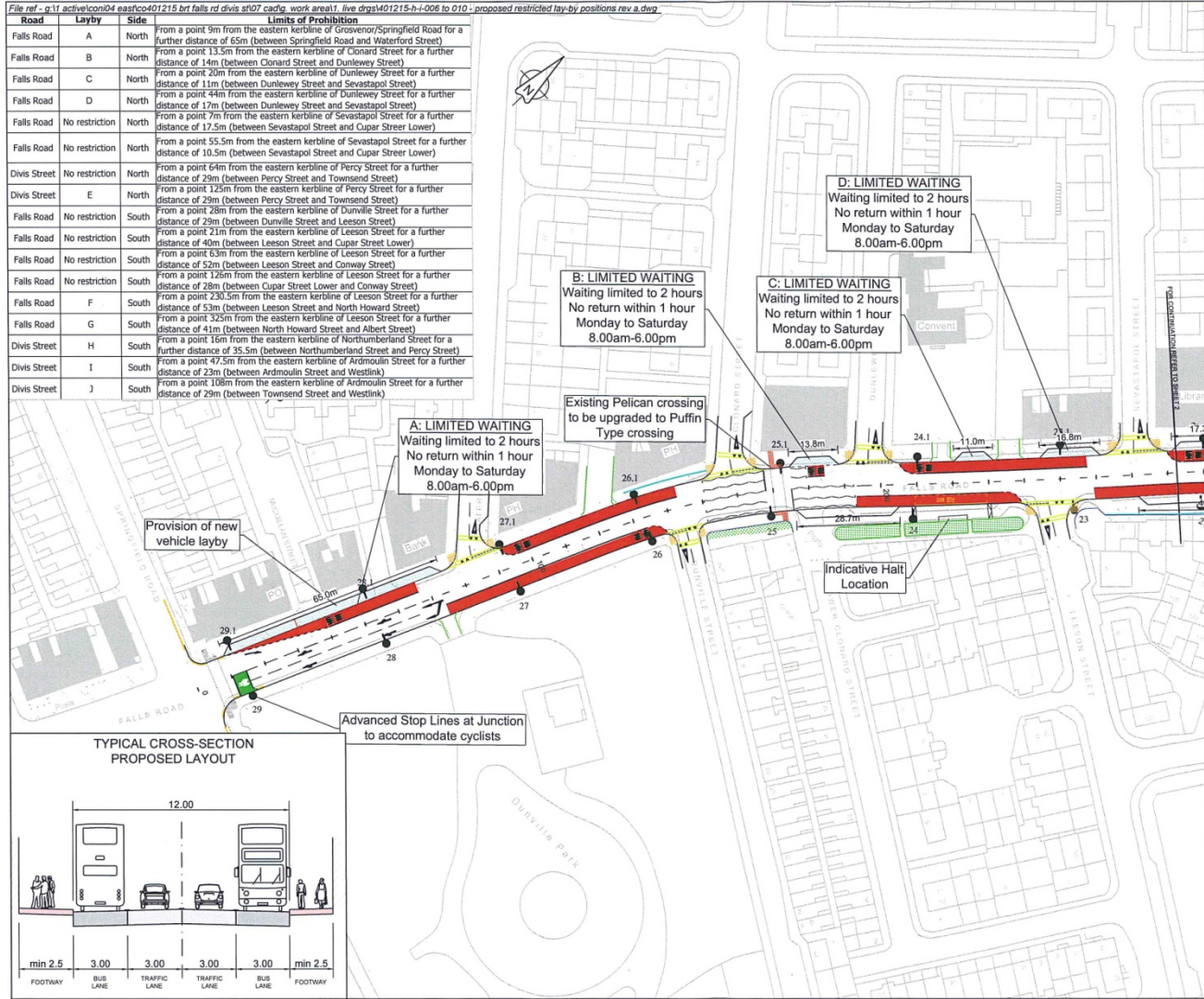
Tel: 02890 253000
Fax: 02890 253220

Department for Regional Development
www.drni.gov.uk

INVESTOR IN PEOPLE

File ref - g11 active/icon04 eastco401215 brt falls rd divis st07 cadg work area1 live drgs401215-h-I-006 to 010 - proposed restricted lay-by positions rev a.dwg

Road	Layby	Side	Limits of Prohibition
Falls Road	A	North	From a point 9m from the eastern kerbline of Grosvenor/Springfield Road for a further distance of 65m (between Springfield Road and Waterford Street)
Falls Road	B	North	From a point 13.5m from the eastern kerbline of Clonard Street for a further distance of 14m (between Clonard Street and Dunlewey Street)
Falls Road	C	North	From a point 20m from the eastern kerbline of Dunlewey Street for a further distance of 11m (between Dunlewey Street and Sevastapol Street)
Falls Road	D	North	From a point 44m from the eastern kerbline of Dunlewey Street for a further distance of 17m (between Dunlewey Street and Sevastapol Street)
Falls Road	No restriction	North	From a point 7m from the eastern kerbline of Sevastapol Street for a further distance of 17.5m (between Sevastapol Street and Cupar Street Lower)
Falls Road	No restriction	North	From a point 55.5m from the eastern kerbline of Sevastapol Street for a further distance of 10.5m (between Sevastapol Street and Cupar Street Lower)
Divis Street	No restriction	North	From a point 64m from the eastern kerbline of Percy Street for a further distance of 29m (between Percy Street and Townsend Street)
Divis Street	E	North	From a point 125m from the eastern kerbline of Percy Street for a further distance of 29m (between Percy Street and Townsend Street)
Falls Road	No restriction	South	From a point 28m from the eastern kerbline of Dunville Street for a further distance of 29m (between Dunville Street and Leeson Street)
Falls Road	No restriction	South	From a point 21m from the eastern kerbline of Leeson Street for a further distance of 40m (between Leeson Street and Cupar Street Lower)
Falls Road	No restriction	South	From a point 63m from the eastern kerbline of Leeson Street for a further distance of 52m (between Leeson Street and Conway Street)
Falls Road	No restriction	South	From a point 125m from the eastern kerbline of Leeson Street for a further distance of 28m (between Cupar Street Lower and Conway Street)
Falls Road	F	South	From a point 230.5m from the eastern kerbline of Leeson Street for a further distance of 53m (between Leeson Street and North Howard Street)
Falls Road	G	South	From a point 325m from the eastern kerbline of Leeson Street for a further distance of 41m (between North Howard Street and Albert Street)
Divis Street	H	South	From a point 16m from the eastern kerbline of Northumberland Street for a further distance of 35.5m (between Northumberland Street and Percy Street)
Divis Street	I	South	From a point 47.5m from the eastern kerbline of Ardroulin Street for a further distance of 23m (between Ardroulin Street and Westlink)
Divis Street	J	South	From a point 108m from the eastern kerbline of Ardroulin Street for a further distance of 29m (between Townsend Street and Westlink)



NOTES

- This drawing should be read with conjunction with drawings 401215-DR-101 to 104.
- The Specification referred to in this Drawing is the Manual of Contract Documents for Highway Works: Volume 1, Specification for Highways (MCHW).
- To allow for installation of future signage (not forming part of this contract), some signs are to be mounted with additional clearance to the bottom of the sign face. Refer to notes for individual sign location requirements.
- Contractor to ensure that method of attaching signs to street lighting columns is suitable for the specified column types.

Key

- Indicative Proposed Halt Location
- Tactile Paving
- Flat top road hump treatment with non-illuminated decorative anti-rum bollards
- Proposed new vehicle containment bollard (to PAS 68:2013)
- Advanced stop line
- Retro reflective self-righting bollard
- Proposed BRT running lanes
- Lay-by with proposed waiting restriction

A	Layby 'L' added, restrictions removed from 'D' & 'E'	ID	SB	04	08.15
Rev	Revision details	Chkd	Appd	Date	
Drawn:	RMN			Preliminary	
Design:	JJ			For comment	
Chkd:	ID			For tender	
Appd:	SB			For construction	
Date:	May 2015			As constructed	
				Other	

amey www.amey.co.uk

Client: **Regional Development**

Project Name: **BRT Work Package 1 Falls Road (Divis St)**

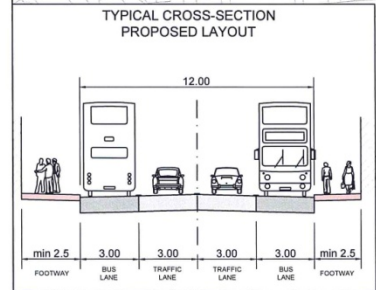
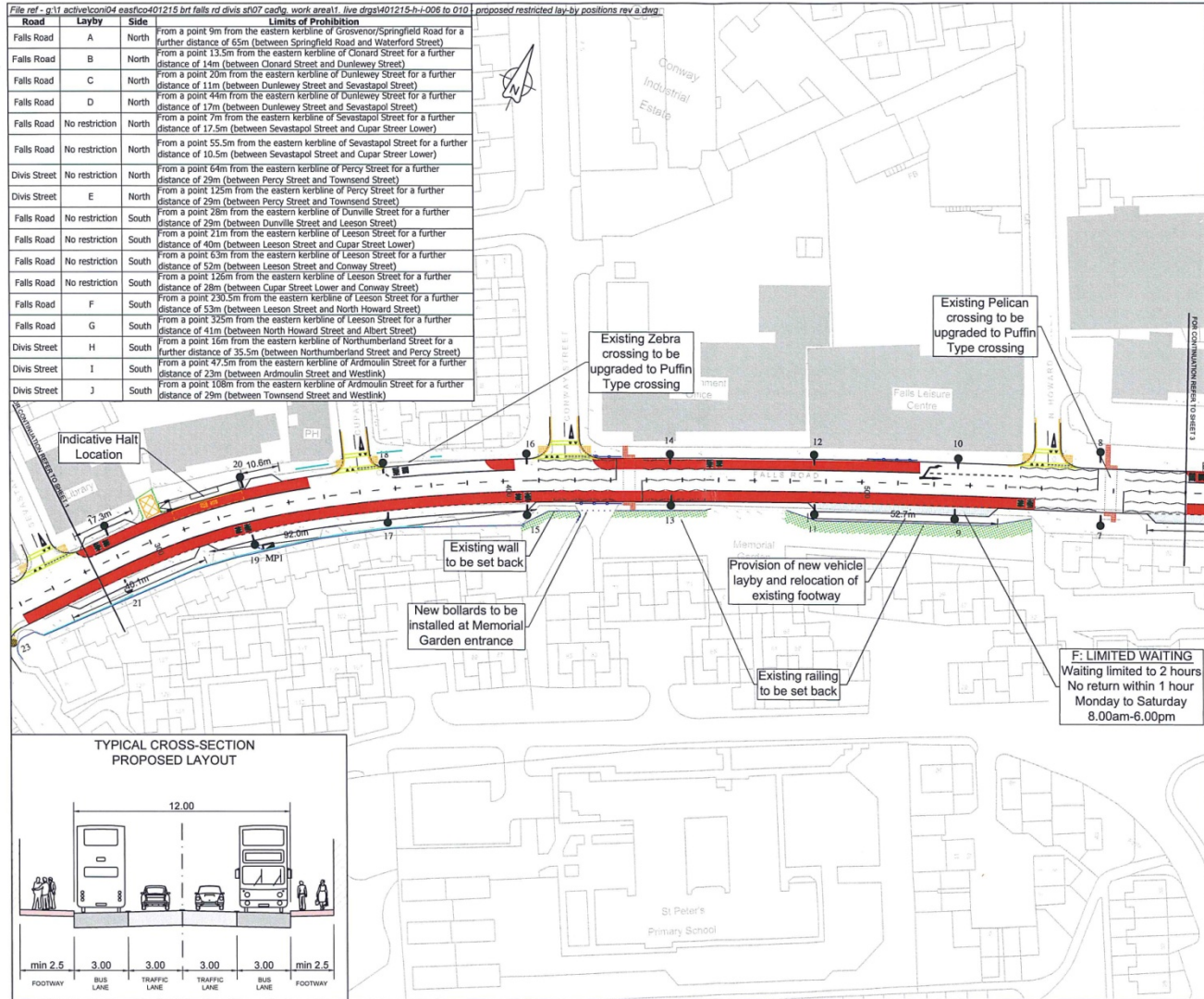
Drawing Title: **HIGHWAYS Proposed Waiting Restrictions Sheet 1 of 5**

Original Drg Size: A3 Dimensions: - -
Scale: 1:1000 Copyright © Amey

Drawing No	Rev
401215-H-I-001	A

File ref - g:\1\active\con04 east\p0401215 bvt falls rd divis st07 cadg_work area\1_live\drps\401215-h-006 to 010_proposed restricted lay-by positions rev a.dwg

Road	Layby	Side	Limits of Prohibition
Falls Road	A	North	From a point 9m from the eastern kerbline of Grosvenor/Springfield Road for a further distance of 65m (between Springfield Road and Waterford Street)
Falls Road	B	North	From a point 13.5m from the eastern kerbline of Clonard Street for a further distance of 14m (between Clonard Street and Dunlewy Street)
Falls Road	C	North	From a point 20m from the eastern kerbline of Dunlewy Street for a further distance of 11m (between Dunlewy Street and Sevastopol Street)
Falls Road	D	North	From a point 44m from the eastern kerbline of Dunlewy Street for a further distance of 17m (between Dunlewy Street and Sevastopol Street)
Falls Road	No restriction	North	From a point 7m from the eastern kerbline of Sevastopol Street for a further distance of 17.5m (between Sevastopol Street and Cupar Street Lower)
Falls Road	No restriction	North	From a point 55.5m from the eastern kerbline of Sevastopol Street for a further distance of 10.5m (between Sevastopol Street and Cupar Street Lower)
Divis Street	No restriction	North	From a point 64m from the eastern kerbline of Percy Street for a further distance of 29m (between Percy Street and Townsend Street)
Divis Street	E	North	From a point 125m from the eastern kerbline of Percy Street for a further distance of 29m (between Percy Street and Townsend Street)
Falls Road	No restriction	South	From a point 28m from the eastern kerbline of Dunville Street for a further distance of 29m (between Dunville Street and Leeson Street)
Falls Road	No restriction	South	From a point 21m from the eastern kerbline of Leeson Street for a further distance of 40m (between Leeson Street and Cupar Street Lower)
Falls Road	No restriction	South	From a point 6.3m from the eastern kerbline of Leeson Street for a further distance of 52m (between Leeson Street and Conway Street)
Falls Road	No restriction	South	From a point 125m from the eastern kerbline of Leeson Street for a further distance of 28m (between Cupar Street Lower and Conway Street)
Falls Road	F	South	From a point 230.5m from the eastern kerbline of Leeson Street for a further distance of 53m (between Leeson Street and North Howard Street)
Falls Road	G	South	From a point 325m from the eastern kerbline of Leeson Street for a further distance of 41m (between North Howard Street and Albert Street)
Divis Street	H	South	From a point 16m from the eastern kerbline of Northumberland Street for a further distance of 35.5m (between Northumberland Street and Percy Street)
Divis Street	I	South	From a point 47.5m from the eastern kerbline of Ardmoilin Street for a further distance of 23m (between Ardmoilin Street and Westlink)
Divis Street	J	South	From a point 108m from the eastern kerbline of Ardmoilin Street for a further distance of 29m (between Townsend Street and Westlink)



- NOTES**
- This drawing should be read in conjunction with drawings 401215-H-101 to 104.
 - The Specification referred to in this Drawing is the Manual of Contract Documents for Highways Works: Volume 1, Specification for Highways (MCHW).
 - To allow for installation of future signage (not forming part of this contract), some signs are to be mounted with additional clearance to the bottom of the sign face. Refer to notes for individual sign location requirements.
 - Contractor to ensure that method of attaching signs to street lighting columns is suitable for the specified column types.

Key

- Indicative Proposed Halt Location
- Tactile Paving
- Flat top road hump treatment with non-illuminated decorative anti-ran bollards
- Proposed new vehicle containment bollard (to PAS 68:2013)
- Advanced stop line
- Retro reflective self-righting bollard
- Proposed BRT running lanes
- Lay-by with proposed waiting restriction

A	Layby 'L' added, restrictions removed from 'D' & 'E'	ID	SB	04.08.15
Rev	Revision details	Chkd	Appd	Date
Drawn:	RMN			Preliminary
Design:	JJ			For comment
Chkd:	ID			For tender
Appd:	SB			For construction
Date:	May 2015			As constructed
				Other



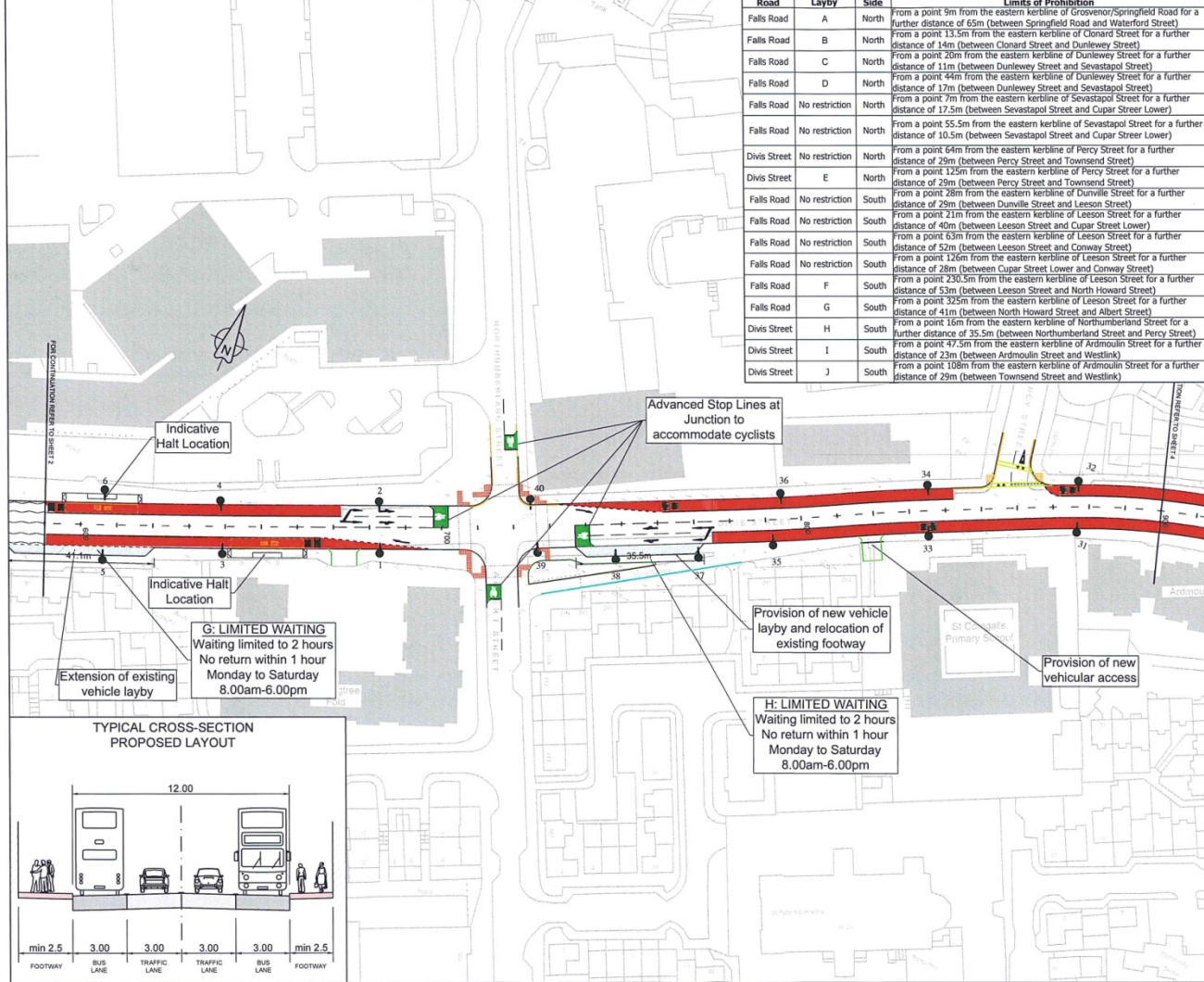
Client

Project Name
BRT Work Package 1
Falls Road (Divis St)

Drawing Title
HIGHWAYS
Proposed Waiting
Restrictions
Sheet 2 of 5

Original Dwg Size: A3	Dimensions: -
Scale: 1:1000	Copyright © Amey
Drawing No 401215-H-002	Rev A

File ref - g:\1\active\con04 eastco401215 brr falls rd divis st07 cadg_work area\1_live\drps401215-h-i-006 to 010 - proposed restricted lay-by positions rev a.dwg



Road	Layby	Side	Limits of Prohibition
Falls Road	A	North	From a point 9m from the eastern kerbline of Grosvenor/Springfield Road for a further distance of 65m (between Springfield Road and Waterford Street)
Falls Road	B	North	From a point 13.5m from the eastern kerbline of Clonard Street for a further distance of 14m (between Clonard Street and Dunlewey Street)
Falls Road	C	North	From a point 23m from the eastern kerbline of Dunlewey Street for a further distance of 11m (between Dunlewey Street and Sevastapol Street)
Falls Road	D	North	From a point 44m from the eastern kerbline of Dunlewey Street for a further distance of 17m (between Dunlewey Street and Sevastapol Street)
Falls Road	No restriction	North	From a point 7m from the eastern kerbline of Sevastapol Street for a further distance of 17.5m (between Sevastapol Street and Cupar Street Lower)
Falls Road	No restriction	North	From a point 55.5m from the eastern kerbline of Sevastapol Street for a further distance of 10.5m (between Sevastapol Street and Cupar Street Lower)
Divis Street	No restriction	North	From a point 64m from the eastern kerbline of Percy Street for a further distance of 29m (between Percy Street and Townsend Street)
Divis Street	E	North	From a point 125m from the eastern kerbline of Percy Street for a further distance of 29m (between Percy Street and Townsend Street)
Falls Road	No restriction	South	From a point 28m from the eastern kerbline of Dunville Street for a further distance of 29m (between Dunville Street and Leeson Street)
Falls Road	No restriction	South	From a point 21m from the eastern kerbline of Leeson Street for a further distance of 40m (between Leeson Street and Cupar Street Lower)
Falls Road	No restriction	South	From a point 63m from the eastern kerbline of Leeson Street for a further distance of 52m (between Leeson Street and Conway Street)
Falls Road	No restriction	South	From a point 126m from the eastern kerbline of Leeson Street for a further distance of 28m (between Cupar Street Lower and Conway Street)
Falls Road	F	South	From a point 230.5m from the eastern kerbline of Leeson Street for a further distance of 52m (between Leeson Street and North Howard Street)
Falls Road	G	South	From a point 325m from the eastern kerbline of Leeson Street for a further distance of 41m (between North Howard Street and Albert Street)
Divis Street	H	South	From a point 16m from the eastern kerbline of Northumberland Street for a further distance of 35.5m (between Northumberland Street and Percy Street)
Divis Street	I	South	From a point 47.5m from the eastern kerbline of Ardmoilin Street for a further distance of 23m (between Ardmoilin Street and Westlink)
Divis Street	J	South	From a point 108m from the eastern kerbline of Ardmoilin Street for a further distance of 29m (between Townsend Street and Westlink)

- ### NOTES
- This drawing should be read with conjunction with drawings 401215-DR-101 to 104.
 - The Specification referred to in this Drawing is the Manual of Contract Documents for Highway Works, Volume 1, Specification for Highways (MCHW).
 - To allow for installation of future signage (not forming part of this contract), some signs are to be mounted with additional clearance to the bottom of the sign face. Refer to notes for individual sign location requirements.
 - Contractor to ensure that method of attaching signs to street lighting columns is suitable for the specified column types.
- Key**
- Indicative Proposed Halt Location
 - Tactile Paving
 - Flat top road hump treatment with non-illuminated decorative anti-ramp bollards
 - Proposed new vehicle containment bollard (to PAS 68:2013)
 - Advanced stop line
 - Retro reflective self-righting bollard
 - Proposed BRT running lanes
 - Lay-by with proposed waiting restriction

Rev	Revision details	Chkd	Appd	Date
A	Layby 'L' added, restrictions removed from 'D' & 'E'	ID	SB	04.08.15

Drawn: RMN	Preliminary
Design: JJ	For comment
Chkd: ID	For tender
Appd: SB	For construction
Date: May 2015	As constructed
	Other



Client

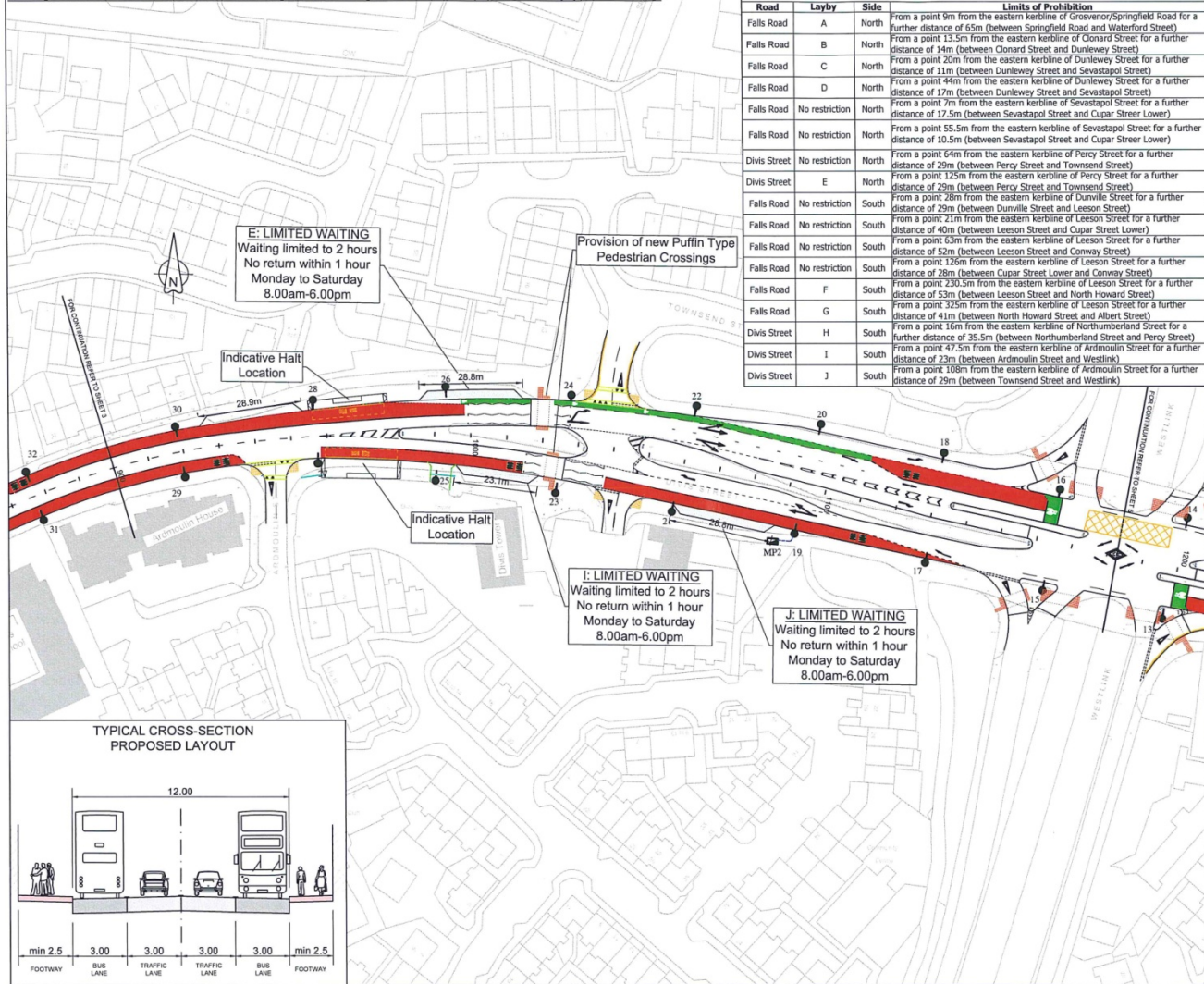
Project Name
BRT Work Package 1
 Falls Road (Divis St)

Drawing Title
HIGHWAYS
 Proposed Waiting Restrictions
 Sheet 3 of 5

Original Dwg Size: A3 Dimensions: -
 Scale: 1:1000 Copyright © Amey

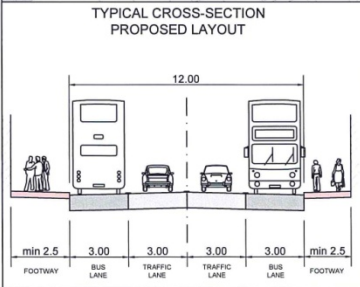
Drawing No
401215-H-I-003
 Rev
A

File Ref: v11:acrive/cont/4 eastco201215-hi-008 to 010 - proposed restricted lay-by positions rev a.dwg



Road	Layby	Side	Limits of Prohibition
Falls Road	A	North	From a point 9m from the eastern kerbline of Grosvenor/Springfield Road for a further distance of 65m (between Springfield Road and Waterford Street)
Falls Road	B	North	From a point 13.5m from the eastern kerbline of Clonard Street for a further distance of 14m (between Clonard Street and Dunlewey Street)
Falls Road	C	North	From a point 20m from the eastern kerbline of Dunlewey Street for a further distance of 11m (between Dunlewey Street and Sevastopol Street)
Falls Road	D	North	From a point 44m from the eastern kerbline of Dunlewey Street for a further distance of 17m (between Dunlewey Street and Sevastopol Street)
Falls Road	No restriction	North	From a point 7m from the eastern kerbline of Sevastopol Street for a further distance of 17.5m (between Sevastopol Street and Cupar Street Lower)
Falls Road	No restriction	North	From a point 55.5m from the eastern kerbline of Sevastopol Street for a further distance of 10.5m (between Sevastopol Street and Cupar Street Lower)
Divis Street	No restriction	North	From a point 64m from the eastern kerbline of Percy Street for a further distance of 29m (between Percy Street and Townsend Street)
Divis Street	E	North	From a point 125m from the eastern kerbline of Percy Street for a further distance of 29m (between Percy Street and Townsend Street)
Falls Road	No restriction	South	From a point 28m from the eastern kerbline of Dunville Street for a further distance of 29m (between Dunville Street and Leeson Street)
Falls Road	No restriction	South	From a point 21m from the eastern kerbline of Leeson Street for a further distance of 40m (between Leeson Street and Cupar Street Lower)
Falls Road	No restriction	South	From a point 63m from the eastern kerbline of Leeson Street for a further distance of 52m (between Leeson Street and Conway Street)
Falls Road	No restriction	South	From a point 105m from the eastern kerbline of Leeson Street for a further distance of 28m (between Cupar Street Lower and Conway Street)
Falls Road	F	South	From a point 230.5m from the eastern kerbline of Leeson Street for a further distance of 53m (between Leeson Street and North Howard Street)
Falls Road	G	South	From a point 325m from the eastern kerbline of Leeson Street for a further distance of 41m (between North Howard Street and Albert Street)
Falls Road	H	South	From a point 16m from the eastern kerbline of Northumberland Street for a further distance of 35.5m (between Northumberland Street and Percy Street)
Divis Street	I	South	From a point 47.5m from the eastern kerbline of Ardmoilin Street for a further distance of 23m (between Ardmoilin Street and Westlink)
Divis Street	J	South	From a point 108m from the eastern kerbline of Ardmoilin Street for a further distance of 29m (between Townsend Street and Westlink)

- ### NOTES
- This drawing should be read in conjunction with drawings 401215-DR-101 to 104.
 - The Specification referred to in this Drawing is the Manual of Contract Documents for Highways Works: Volume 1, Specification for Highways (MCHW).
 - To allow for installation of future signage (not forming part of this contract), some signs are to be mounted with additional clearance to the bottom of the sign face. Refer to notes for individual sign location requirements.
 - Contractor to ensure that method of attaching signs to street lighting columns is suitable for the specified column types.
- Key**
- Indicative Proposed Halt Location
 - Tactile Paving
 - Flat top road hump treatment with non-illuminated decorative anti-ran bollards
 - Proposed new vehicle containment bollard (to PAS 68:2013)
 - Advanced stop line
 - Retro reflective self-righting bollard
 - Proposed BRT running lanes
 - Lay-by with proposed waiting restriction



A	Layby 'L' added, restrictions removed from 'D' & 'E'	ID	SB	04.08.15
Rev	Revision details	Chkd	Appd	Date
Drawn:	RMN			Preliminary
Design:	JJ			For comment
Chkd:	ID			For tender
Appd:	SB			For construction
Date:	May 2015			As constructed
				Other

amey www.amey.co.uk

Client: Department for Regional Development www.dr.dps.gov.uk

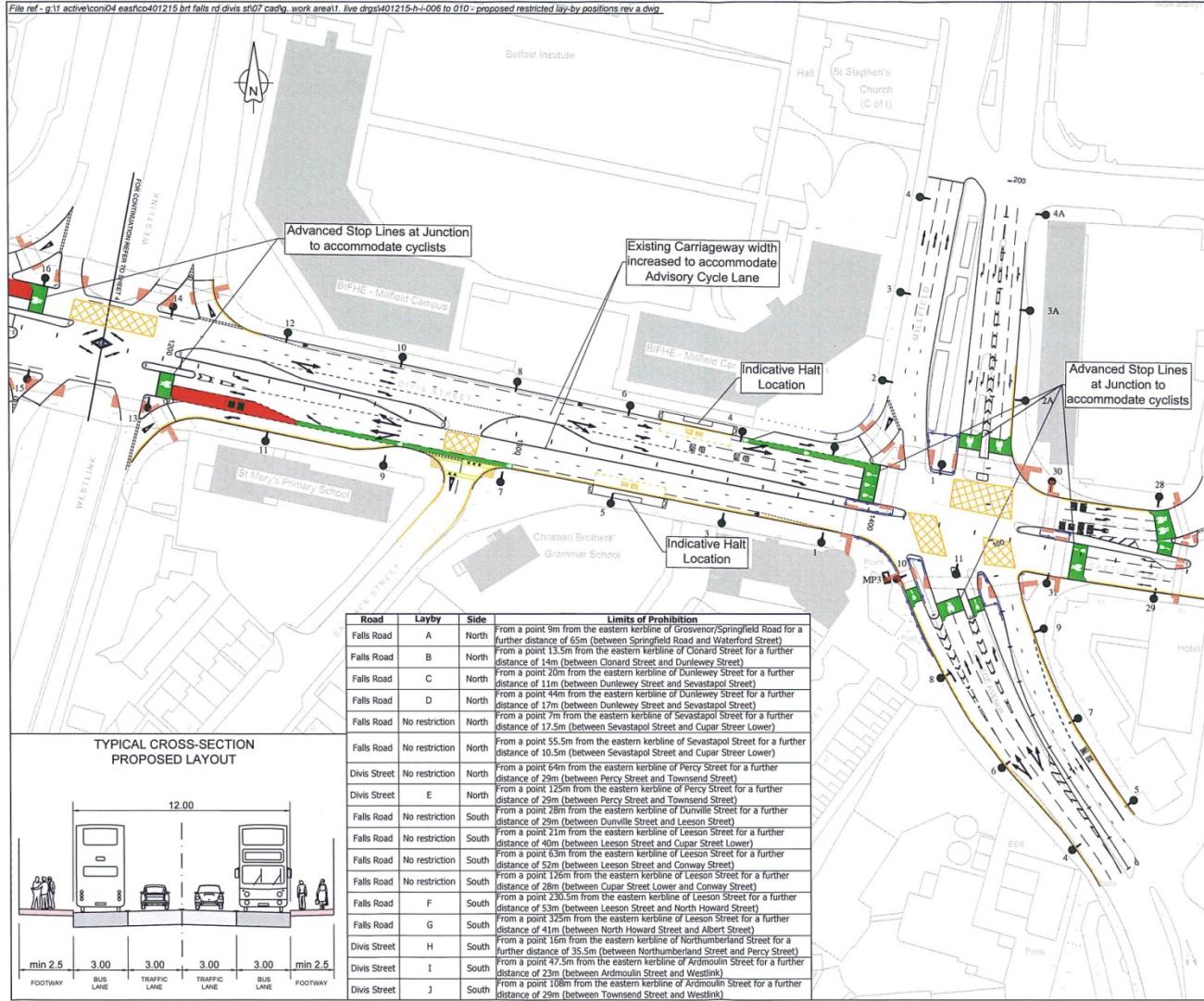
Project Name: BRT Work Package 1 Falls Road (Divis St)

Drawing Title: HIGHWAYS Proposed Waiting Restrictions Sheet 4 of 5

Original Dwg Size: A3 Dimensions: - Scale: 1:1000 Copyright © Amey

Drawing No: 401215-H-I-004 Rev: A

File ref - g:\1 active\con04 east\c401215 btf falls rd divs st07 cad\g. work area\1. live drgs\401215-h-i-006 to 010 - proposed restricted lay-by positions rev a.dwg



- ### NOTES
- This drawing should be read with conjunction with drawings 401215-DR-101 to 104.
 - The Specification referred to in this Drawing is the Manual of Contract Documents for Highway Works: Volume 1, Specification for Highways (MCHW).
 - To allow for installation of future signage (not forming part of this contract), some signs are to be mounted with additional clearance to the bottom of the sign face. Refer to notes for individual sign location requirements.
 - Contractor to ensure that method of attaching signs to street lighting columns is suitable for the specified column types.
- Key**
- Indicative Proposed Halt Location
 - Tactile Paving
 - Flat top road hump treatment with non-illuminated decorative anti-ramp bollards
 - Proposed new vehicle containment bollard (to PAS 68:2013)
 - Advanced stop line
 - Retro reflective self-lighting bollard
 - Proposed BRT running lanes
 - Lay-by with proposed waiting restriction

A	Layby 'L' added, restrictions removed from 'D' & 'E'	ID	SB	04.08.15
Rev	Revision details	Chkd	Appd	Date
Drawn: RMN			Preliminary	
Design: JJ			For comment	✓
Chkd: ID			For tender	
Appd: SB			For construction	
Date: May 2015			As constructed	
			Other	



Client: Regional Development

Project Name:
BRT Work Package 1
Falls Road (Divs St)

Drawing Title:
HIGHWAYS
Proposed Waiting Restrictions
Sheet 5 of 5

Original Dwg Size: A3 Dimensions: -
Scale: 1:1000 Copyright © Amey

Drawing No: 401215-H-I-005 Rev: A

Road	Layby	Side	Limits of Prohibition
Falls Road	A	North	From a point 9m from the eastern kerbline of Grosvenor/Springfield Road for a further distance of 65m (between Springfield Road and Waterford Street)
Falls Road	B	North	From a point 13.5m from the eastern kerbline of Clonard Street for a further distance of 14m (between Clonard Street and Dunlewy Street)
Falls Road	C	North	From a point 20m from the eastern kerbline of Dunlewy Street for a further distance of 11m (between Dunlewy Street and Sevastapol Street)
Falls Road	D	North	From a point 44m from the eastern kerbline of Dunlewy Street for a further distance of 17m (between Dunlewy Street and Sevastapol Street)
Falls Road	No restriction	North	From a point 7m from the eastern kerbline of Sevastapol Street for a further distance of 17.5m (between Sevastapol Street and Cupar Street Lower)
Falls Road	No restriction	North	From a point 55.5m from the eastern kerbline of Sevastapol Street for a further distance of 10.5m (between Sevastapol Street and Cupar Street Lower)
Divis Street	No restriction	North	From a point 64m from the eastern kerbline of Percy Street for a further distance of 29m (between Percy Street and Townsend Street)
Divis Street	E	South	From a point 125m from the eastern kerbline of Percy Street for a further distance of 29m (between Percy Street and Townsend Street)
Falls Road	No restriction	South	From a point 28m from the eastern kerbline of Dunville Street for a further distance of 29m (between Dunville Street and Leeson Street)
Falls Road	No restriction	South	From a point 21m from the eastern kerbline of Leeson Street for a further distance of 40m (between Leeson Street and Cupar Street Lower)
Falls Road	No restriction	South	From a point 53m from the eastern kerbline of Leeson Street for a further distance of 52m (between Leeson Street and Conway Street)
Falls Road	No restriction	South	From a point 126m from the eastern kerbline of Leeson Street for a further distance of 28m (between Cupar Street Lower and Conway Street)
Falls Road	F	South	From a point 230.5m from the eastern kerbline of Leeson Street for a further distance of 53m (between Leeson Street and North Howard Street)
Falls Road	G	South	From a point 325m from the eastern kerbline of Leeson Street for a further distance of 41m (between North Howard Street and Albert Street)
Divis Street	H	South	From a point 16m from the eastern kerbline of Northumberland Street for a further distance of 35.5m (between Northumberland Street and Percy Street)
Divis Street	I	South	From a point 47.5m from the eastern kerbline of Ardmoilin Street for a further distance of 23m (between Ardmoilin Street and Westlink)
Divis Street	J	South	From a point 108m from the eastern kerbline of Ardmoilin Street for a further distance of 29m (between Townsend Street and Westlink)

